

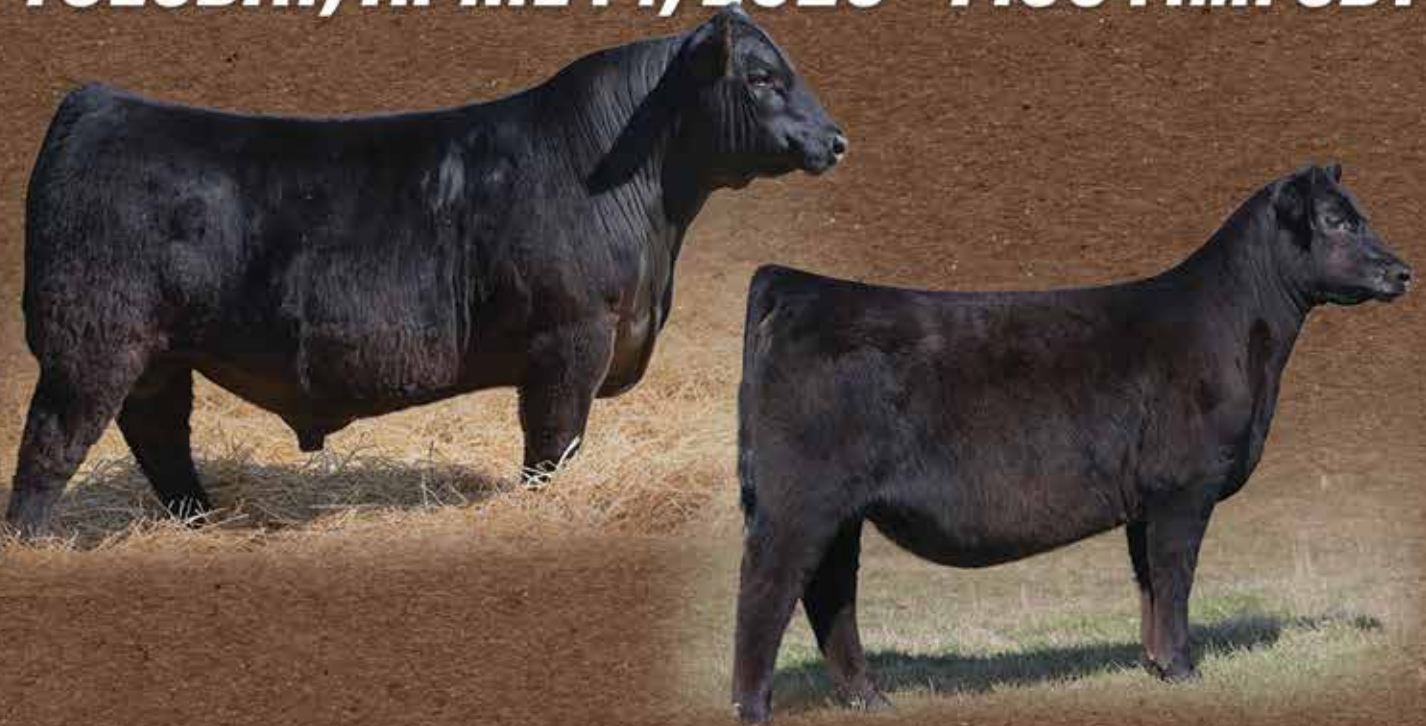
**DAMERON
ANGUS**

ANNUAL LIVE ONLINE

Spring Sale

**CCI
LIVE** **LiveONLINE™**

TUESDAY, APRIL 14, 2026 - 7:30 P.M. CDT



Selling - **10 BULLS AND 17 SUMMER/FALL BORN HEIFERS**

GARY (309)261-2191 JEFF (309)532-2000

VIEW PHOTOS AND VIDEOS ONLINE AT WWW.DAMERONANGUS.COM OR FACEBOOK @DAMERONANGUSFARMS

SALE INFORMATION

AUCTIONEER

CODY LOWDERMAN - 309.313.2171

IL #441.001255

SALE DAY PHONES

GARY DAMERON - 309.261.2191

JEFF DAMERON - 309.532.2000

JEREMY HAAG - 406.833.0117

CATTLE LOCATION

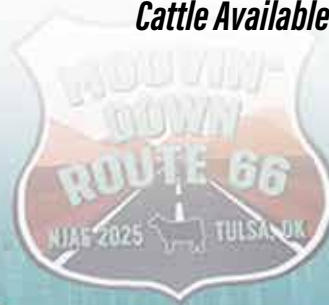
Dameron Angus Farm: 23620 N. 2450 East Rd, Lexington, IL 61753

APRIL 14, 2026

7:30 P.M. CDT - LIVE ONLINE CLOSING OF SALE



Cattle Available for Viewing Any Time!



congratulations to these

WINNERS



Barbara 765



Primrose 659



Swigart

Lucy 9193



Swigart

Pearl Westfall

past champions
MAKING THE NEXT GENERATION
Champions





DAMERON FRONTIER GAL 5115 – She sells as Lot 1.

- A show ring trendsetter with a fashionable new-generation pedigree and the look and phenotype that will compete at every level. This direct daughter of STAG Good Times 201 ET stems back to one of the top-producing donors in the Dameron Angus program, Dameron Frontier Gal 645, who produced \$302,000 on five head through the 2025 fall production sale to average \$60,400.
- Dameron Frontier Gal 424, a maternal sister, is the \$210,000 top-selling Lot 1 female of the 2024 Dameron Angus Fall Production Sale for a \$420,000 valuation going to Circle M Farms of Texas and went on to be named the Grand Champion Female of the 2025 Dixie National ROV Angus Show, the Jr. Heifer Calf Div. III at the Cattlemen's Congress Junior Show, Jr. Heifer Calf Champion Div. III at the Cattlemen's Congress ROV Angus Show, and the 2026 Res. Div. V Female at the Fort Worth Stock Show.
- Her dam is a daughter of PVF Insight 0129 back to EXAR Frontier Gal 1447, who was the \$80,000 highlight through a past The Big Event Sale and a direct daughter of a National Western Stock Show Res. Grand Champion Female and National Junior Angus Show Grand Champion, WCC Frontier Gal 39.



DAMERON FRONTIER GAL 424
The \$210,000 maternal sister to Lot 1-5.

1 DAMERON FRONTIER GAL 5115

BD. 9/25/25 Cow AAA. 21544413 TATTOO. 5115

STAG GOOD TIMES 201 ET	SCC SCH 24 KARAT 838	SCC TRADITION OF 24
	SCC SCH PHYLLIS 6104	FCF PROVEN QUEEN 419
DAMERON FRONTIER GAL 645	PVF INSIGHT 0129	SILVEIRAS STYLE 9303
	EXAR FRONTIER GAL 1447	SCC PHYLLIS 052
		SAV BRILLIANCE 8077
		PVF MISSIE 790
		DAMERON FIRST CLASS
		WCC FRONTIER GAL 39

CED	BW	WW	YW	MILK	MARB	REA	\$M 34	\$W 33
I-3	I+4.8	I+62	I+100	I+17	I+.17	I+.80	\$B 123	\$C 194

SELLING ONE-HALF INTEREST.

2 DAMERON FRONTIER GAL 5118

BD. 9/30/25 Cow AAA. 21544564 TATTOO. 5118

STAG GOOD TIMES 201 ET	SCC SCH 24 KARAT 838	SCC TRADITION OF 24
	SCC SCH PHYLLIS 6104	FCF PROVEN QUEEN 419
DAMERON FRONTIER GAL 645	PVF INSIGHT 0129	SILVEIRAS STYLE 9303
	EXAR FRONTIER GAL 1447	SCC PHYLLIS 052
		SAV BRILLIANCE 8077
		PVF MISSIE 790
		DAMERON FIRST CLASS
		WCC FRONTIER GAL 39

CED	BW	WW	YW	MILK	MARB	REA	\$M 40	\$W 52
I+1	I+3.0	I+61	I+103	I+26	I+.28	I+.95	\$B 135	\$C 215



DAMERON FRONTIER GAL 5118 – She sells as Lot 2.

- A featured late September show heifer prospect that is something special by STAG Good Times 201 ET with the look and phenotype that will compete at every level. This beautiful female stems back to one of the top-producing donors in the Dameron Angus program, Dameron Frontier Gal 645, who produced \$302,000 on five head through the 2025 fall production sale to average \$60,400.
- Dameron Frontier Gal 424, a maternal sister, is the \$210,000 top-selling Lot 1 female of the 2024 Dameron Angus Fall Production Sale for a \$420,000 valuation going to Circle M Farms of Texas and went on to be named the Grand Champion Female of the 2025 Dixie National ROV Angus Show, the Jr. Heifer Calf Div. III at the Cattlemen's Congress Junior Show, Jr. Heifer Calf Champion Div. III at the Cattlemen's Congress ROV Angus Show, and the 2026 Res. Div. V Female at the Fort Worth Stock Show.
- Her dam is a daughter of PVF Insight 0129 back to EXAR Frontier Gal 1447, who was the \$80,000 highlight through a past The Big Event Sale and a direct daughter of a National Western Stock Show Res. Grand Champion Female and National Junior Angus Show Grand Champion, WCC Frontier Gal 39.



DAMERON FRONTIER GAL 645
Dam of Lots 1-5.

DAMERON FRONTIER GAL FAMILY

- Here is a special sale attraction by ROSE MC Encore 0463 back to one of the top-producing donors in the Dameron Angus program, Dameron Frontier Gal 645, who produced \$302,000 on five head through the 2025 fall production sale to average \$60,400.
- Dameron Frontier Gal 424, a maternal sister, is the \$210,000 top-selling Lot 1 female of the 2024 Dameron Angus Fall Production Sale for a \$420,000 valuation going to Circle M Farms of Texas and went on to be named the Grand Champion Female of the 2025 Dixie National ROV Angus Show, the Jr. Heifer Calf Div. III at the Cattlemen's Congress Junior Show, Jr. Heifer Calf Champion Div. III at the Cattlemen's Congress ROV Angus Show, and the 2026 Res. Div. V Female at the Fort Worth Stock Show.
- Her dam is a daughter of PVF Insight 0129 back to EXAR Frontier Gal 1447, who was the \$80,000 highlight through a past The Big Event Sale and a direct daughter of a National Western Stock Show Res. Grand Champion Female and National Junior Angus Show Grand Champion, WCC Frontier Gal 39.



DAMERON FRONTIER GAL 5106 – She sells as Lot 3.



DAMERON FRONTIER GAL 424
The \$210,000 maternal sister to Lot 1-5.

3 DAMERON FRONTIER GAL 5106

BD. 9/16/25 Cow AAA. 21544610 TATTOO. 5106

ROSE MC ENCORE 0463

SSF ON POINT 4028

BURNS ELBA 1454

COLBURN PRIMO 5153
PLUM CREEK ANNIE LU 4472
PLAINVIEW LUTTON E102
BURNS ELBA B536

DAMERON FRONTIER GAL 645

PVF INSIGHT 0129

EXAR FRONTIER GAL 1447

SAV BRILLIANCE 8077
PVF MISSIE 790
DAMERON FIRST CLASS
WCC FRONTIER GAL 39

CED	BW	WW	YW	MILK	MARB	REA	SM 34	SW 33
I-3	I+4.8	I+62	I+100	I+17	I+.17	I+.80	\$B 123	\$C 194

- Stunning from every angle is this daughter of the past National Junior Angus Show Grand Champion, Silveiras Style 9303, back to one of the top-producing donors in the Dameron Angus program, Dameron Frontier Gal 645, who produced \$302,000 on five head through the 2025 fall production sale to average \$60,400.
- Dameron Frontier Gal 424, a maternal sister, is the \$210,000 top-selling Lot 1 female of the 2024 Dameron Angus Fall Production Sale for a \$420,000 valuation going to Circle M Farms of Texas and went on to be named the Grand Champion Female of the 2025 Dixie National ROV Angus Show, the Jr. Heifer Calf Div. III at the Cattlemen's Congress Junior Show, Jr. Heifer Calf Champion Div. III at the Cattlemen's Congress ROV Angus Show, and the 2026 Res. Div. V Female at the Fort Worth Stock Show.
- Her dam is a daughter of PVF Insight 0129 back to EXAR Frontier Gal 1447, who was the \$80,000 highlight through a past The Big Event Sale and a direct daughter of a National Western Stock Show Res. Grand Champion Female and National Junior Angus Show Grand Champion, WCC Frontier Gal 39.



DAMERON FRONTIER GAL 5104 – She sells as Lot 4.



DAMERON FRONTIER GAL 424
The \$210,000 maternal sister to Lot 1-5.

4 DAMERON FRONTIER GAL 5104

BD. 9/14/25 Cow AAA. 21544559 TATTOO. 5104

SILVEIRAS STYLE 9303

GAMBLES HOT ROD

SILVEIRAS ELBA 2520

FAMOUS 7001
CHAMPION HILL LADY 703
TWIN VALLEY PRECISION E161
DAR ELBA 55

DAMERON FRONTIER GAL 645

PVF INSIGHT 0129

EXAR FRONTIER GAL 1447

SAV BRILLIANCE 8077
PVF MISSIE 790
DAMERON FIRST CLASS
WCC FRONTIER GAL 39

CED	BW	WW	YW	MILK	MARB	REA	SM 14	SW 34
I+0	I+3.5	I+55	I+95	I+21	I+.52	I+.64	\$B 135	\$C 189

DAMERON FRONTIER GAL & SANDY FAMILIES



DAMERON FRONTIER GAL 5113 – She sells as Lot 5.

- Hard to find and impossible to forget is this featured daughter of Silveiras Style 9303 back to one of the top-producing donors in the Dameron Angus program, Dameron Frontier Gal 645, who produced \$302,000 on five head through the 2025 fall production sale to average \$60,400.
- Dameron Frontier Gal 424, a maternal sister, is the \$210,000 top-selling Lot 1 female of the 2024 Dameron Angus Fall Production Sale for a \$420,000 valuation going to Circle M Farms of Texas and went on to be named the Grand Champion Female of the 2025 Dixie National ROV Angus Show, the Jr. Heifer Calf Div. III at the Cattlemen's Congress Junior Show, Jr. Heifer Calf Champion Div. III at the Cattlemen's Congress ROV Angus Show, and the 2026 Res. Div. V Female at the Fort Worth Stock Show.
- Her dam is a daughter of PVF Insight 0129 back to EXAR Frontier Gal 1447, who was the \$80,000 highlight through a past The Big Event Sale and a direct daughter of a National Western Stock Show Res. Grand Champion Female and National Junior Angus Show Grand Champion, WCC Frontier Gal 39.



DAMERON FRONTIER GAL 645
Dam of Lots 1-5.

5 DAMERON FRONTIER GAL 5113

BD. 9/24/25 Cow AAA. 21544561 TATTOO. 5113

SILVEIRAS STYLE 9303 GAMBLES HOT ROD FAMOUS 7001
CHAMPION HILL LADY 703
SILVEIRAS ELBA 2520 TWIN VALLEY PRECISION E161
DAR ELBA 55

PVF INSIGHT 0129 SAV BRILLIANCE 8077
PVF MISSIE 790
DAMERON FRONTIER GAL 645 DAMERON FIRST CLASS
EXAR FRONTIER GAL 1447 WCC FRONTIER GAL 39

CED	BW	WW	YW	MILK	MARB	REA	SM 14	SW 34
1+0	1+3.5	1+55	1+95	1+21	1+.52	1+.64	SB 135	SC 189

6 DAMERON SANDY 5119

BD. 10/2/25 Cow AAA. 21544504 TATTOO. 5119

ROSE REPLAY 3321 ROSE MC ENCORE 0463 SSF ON POINT 4028
BURNS ELBA 1454
UDE QUEEN RUTH 0204 KR CASINO 6243
KDI QUEEN RUTH 502

SCC SCH 24 KARAT 838 SCC TRADITION OF 24
FCF PROVEN QUEEN 419
SELDOM REST SANDY 2030 EXAR CLASSEN 1422B
SELDOM REST SANDY 5086 SILVEIRAS S SIS SANDY 2354

CED	BW	WW	YW	MILK	MARB	REA	SM 35	SW 43
1+1	1+4.8	1+66	1+106	1+20	1-.03	1+.47	SB 105	SC 171

SELLING ONE-HALF INTEREST.



DAMERON SANDY 5119 – She sells as Lot 6.

- Loaded with show ring presence and a daughter of ROSE Replay 3321, she stems back to a foundation Sandy donor in the Dameron Angus program, Seldom Rest Sandy 2030, who was the Supreme Champion of the 2024 Cattlemen's Congress, and she continued her winning ways being named Res. Grand Champion at the National Western Stock Show ROV Angus Show and Fourth/Fifth Overall at the Illinois Beef Expo, in respective rings.
- Granddam of this female, Seldom Rest Sandy 5086, was the 2017 National Junior Angus Show Grand Champion Cow/Calf Pair.



SELDOM REST 2030
Supreme Champion Female, 2024 Cattlemen's Congress & dam of Lot 6.

DAMERON SANDY FAMILY

- Captivating daughter of ROSE Replay 3321 who stems back to a foundation Sandy donor in the Dameron Angus program, Seldom Rest Sandy 2030, the 2024 Supreme Champion Female at the Cattlemen's Congress. Her dam continued her winning ways being named Res. Grand Champion at the National Western Stock Show ROV Angus Show and Fourth/Fifth Overall at the Illinois Beef Expo in respective rings, and Division Winner at the Cattlemen's Congress.
- Granddam of this female, Seldom Rest Sandy 5086, was the 2017 National Junior Angus Show Grand Champion Cow/Calf Pair.



DAMERON SANDY 5126 – She sells as Lot 7.

7

DAMERON SANDY 5126

BD. 10/16/25 Cow AAA. 21544604 TATTOO. 5126

ROSE REPLAY 3321

ROSE MC ENCORE 0463

UDE QUEEN RUTH 0204

SCC SCH 24 KARAT 838

SELDOM REST SANDY 2030

SELDOM REST SANDY 5086

SSF ON POINT 4028
BURNS ELBA 1454
KR CASINO 6243
KDI QUEEN RUTH 502

SCC TRADITION OF 24
FCF PROVEN QUEEN 419
EXAR CLASSEN 1422B
SILVEIRAS S SIS SANDY 2354

CED	BW	WW	YW	MILK	MARB	REA	\$M 35	\$W 43
I+1	I+4.8	I+66	I+106	I+20	I-.03	I+.47	\$B 105	\$C 171

8

DAMERON SANDY 5121

BD. 10/8/25 Cow AAA. 21544580 TATTOO. 5121

PVF DLX KING PIN 0058

PVF BLACKLIST 7077

PVF LUCY 4189

EXAR CLASSEN 1422B

SELDOM REST SANDY 2207

SILVEIRAS S SIS SANDY 2354

PVF INSIGHT 0129
PVF BLACKBIRD 3070
C&C PRIORITY 1428B EXAR
THOMAS LUCY 7360

DAMERON FIRST CLASS
EXAR PRINCESS 2006
SILVEIRAS STYLE 9303
KNC CABIN CREEK SANDY 804

CED	BW	WW	YW	MILK	MARB	REA	\$M 41	\$W 40
I+3	I+3.4	I+61	I+105	I+19	I+.52	I+.73	\$B 141	\$C 224

- For the backdrop. This featured daughter of PVF DLX King Pin 0058 stems back to the legendary Sandy family on the bottom side. Her dam, Seldom Rest Sandy 2207, was the Res. Division Champion of the Atlantic National and is from one of the all-time great matings in the show heifer industry; she is a daughter of EXAR Classen 1422B back to Silveiras S Sis Sandy 2354 and has an array of full sisters who have been champions at all major shows and continue to set the bar high in the show industry world.
- This featured early October female reads with tremendous presence, outstanding phenotype, and she can compete at every level.
- Dameron C-5 Lucy 2242, a maternal sister, was selected as the 2024 NJAS Grand Champion Bred & Owned Cow Calf Pair.



DAMERON SANDY 5121 – She sells as Lot 8.



DAMERON SANDY & LUCY FAMILIES



DAMERON SANDY 589 – She sells as Lot 9.

- Designed for the purple. This featured daughter of BNWZ Dignity 8017 stems back to the featured Sandy family. Her dam was the Res. Early Jr. Champion at the Cattlemen's Congress Junior Show then went on to be the dam of the Champion Angus Female at the Ohio Beef Expo and Div. Champion at the National Western Stock Show, as well as she produced the 2025 Grand Champion Bull at the Cattlemen's Congress, SCC Wicked Wager 346.
- Grandmother was the Res. Grand Champion Female at the 2017 National Western Stock Show and has gone on to produce daughters that include the 2025 Res. Supreme Champion Female at the Cattlemen's Congress.
- This beautiful summer heifer offers a tremendous opportunity to compete at every level.



SCC WICKED WAGER 346
Grand Champion Bull of the 2025 Cattlemen's Congress & maternal brother to Lot 9.

9

DAMERON SANDY 589

BD. 7/3/25 Cow AAA. 21542987 TATTOO. 589

BNWZ DIGNITY 8017

PVF INSIGHT 0129

SAV BRILLIANCE 8077

CCC SARA'S DREAM 5116

PVF MISSIE 790
DAMERON FIRST CLASS
SILVEIRAS SARAS DREAM 1339

SCC SCH SANDYS TRADITION 928

SCC TRADITION OF 24
BCII SANDY 0215

WRIGHT SCC BOOTLEGGER 0522
SCC ROYAL BLACKBIRD GAF 112
SILVEIRAS STYLE 9303
KNC CABIN CREEK SANDY 905

CED	BW	WW	YW	MILK	MARB	REA	\$M 15	\$W 36
1-2	1+4.3	1+59	1+99	1+21	1+.08	1+.68	\$B 122	\$C 173

10

DAMERON LUCY 598

BD. 8/5/25 Cow AAA. 21544615 TATTOO. 598

SCC SCH 24 KARAT 838

SCC TRADITION OF 24

WRIGHT SCC BOOTLEGGER 0522

FCF PROVEN QUEEN 419

SCC ROYAL BLACKBIRD GAF 112
SCC FIRST-N GOAL GAF 114
FCF SCC PVF PROVEN QUEEN 615

DAMERON LUCY 4137

DAMERON FIRST CLASS
DAMERON LUCY 868

EXG RS FIRST RATE S903 R3
DAMERON NORTHERN MISS 3114
EXAR LUTTON 1831
MW LUCY 4

CED	BW	WW	YW	MILK	MARB	REA	\$M 33	\$W 53
1+2	1+3.1	1+66	1+106	1+22	1-.02	1+.83	\$B 106	\$C 171



DAMERON LUCY 598 – She sells as Lot 10.

- This featured summer heifer by SCC SCH 24 Karat 838 is an attention grabber who stems back to the featured Dameron Lucy 4137, one of the all-time great producers in the Dameron Angus program; she was the \$85,000 feature of a past Dameron Angus sale and went on to be the Supreme Champion at the Illinois Beef Expo.
- Dameron Lucy 9193, a maternal sister, was the 2021 Grand Champion Female at the National Junior Angus Show and Res. Grand Champion at the Atlantic National while being one of the winningest females in the summer of 2021. Other maternal sisters include the \$200,000 valued Dameron Lucy 313, the \$190,000 valued Dameron Lucy 312, the 2023 All-American Futurity Fifth Overall Champion Dameron C-5 Lucy 2178, and an array of others.
- The grandmother was a past ROV ET Dam of the Year.



DAMERON LUCY 868 – Maternal granddam of Lot 10.

DAMERON LUCY FAMILY

- Show heifer deluxe and a daughter of SCC SCH 24 Karat 838 back to Dameron Lucy 5119, who was the \$80,000 selection through a past Dameron Angus sale and went on to be the 2016 Res. Late Jr. Champion of the Illinois State Fair, the 2016 Res. Late Jr. Champion of the Illinois Junior Angus Field Day, and is a full sister to the \$85,000 Dameron Lucy 4137, who was the Illinois Beef Expo Supreme Champion.
- This pedigree is a proven, time-tested pedigree that offers tremendous show ring potential.



DAMERON LUCY 4137

Illinois Beef Expo Supreme Champion and full sister to Lot 11.



DAMERON LUCY 596 – She sells as Lot 11.

11

DAMERON LUCY 596

BD. 7/14/25 Cow AAA. 21544614 TATTOO. 596

SCC SCH 24 KARAT 838

SCC TRADITION OF 24
FCF PROVEN QUEEN 419

WRIGHT SCC BOOTLEGGERS 0522
SCC ROYAL BLACKBIRD GAF 112
SCC FIRST-N-GOAL GAF 114
FCF SCC PVF PROVEN QUEEN 615

DAMERON LUCY 5119

DAMERON FIRST CLASS
DAMERON LUCY 868

EXG RS FIRST RATE S903 R3
DAMERON NORTHERN MISS 3114
EXAR LUTTON 1831
MW LUCY 4

CED	BW	WW	YW	MILK	MARB	REA	\$M 33	\$W 47
I+1	I+3.4	I+61	I+98	I+24	I+.08	I+.66	\$B 115	\$C 182

12

DAMERON LUCY 5109

BD. 9/21/25 Cow AAA. 21544508 TATTOO. 5109

SCC SCH 24 KARAT 838

SCC TRADITION OF 24
FCF PROVEN QUEEN 419

WRIGHT SCC BOOTLEGGERS 0522
SCC ROYAL BLACKBIRD GAF 112
SCC FIRST-N-GOAL GAF 114
FCF SCC PVF PROVEN QUEEN 615

DAMERON C-5 LUCY 2242

PVF INSIGHT 0129
DAMERON LUCY 4137

SAV BRILLIANCE 8077
PVF MISSIE 790
DAMERON FIRST CLASS
DAMERON LUCY 868

CED	BW	WW	YW	MILK	MARB	REA	\$M 45	\$W 56
I+1	I+3.1	I+66	I+108	I+23	I+.09	I+.95	\$B 124	\$C 206

- Details matter, and this female has a tremendous look and presence while stemming from a long maternal lineage of past champions. This daughter of SCC SCH 24 Karat 838 stems back to Dameron C-5 Lucy 2242, who is the Overall Bred & Owned Champion of the 2023 All-American Futurity Junior Show and in 2024 went on to be named the Grand Champion Bred & Owned Cow-Calf Pair at the National Junior Angus Show, Res. Heifer Calf Champion Div. I of the Cattlemen's Congress Junior Show, Res. Div. I Heifer Calf Champion of the Cattlemen's Congress ROV Angus Show, and Fifth Overall at the 2023 Illinois Angus Field Day.
- Dameron Lucy 9193, a full sister to the dam, was selected as the 2021 Grand Champion Female of the National Junior Angus Show, Res. Grand Champion at the Atlantic National, and was one of the winningest heifers in the 2021 summer show season.



DAMERON LUCY 9193 – The 2021 Grand Champion Female of the NJAS and full sister to Lot 12.



DAMERON LUCY 5109 – She sells as Lot 12.

DAMERON LUCY FAMILY



DAMERON LUCY 5125 – She sells as Lot 13.

- Built to impress and designed to last is this featured October show heifer prospect. She has a tremendous look and presence while stemming from a long maternal lineage of past champions. This daughter of SCC SCH 24 Karat 838 stems back to Dameron C-5 Lucy 2242, who is the Overall Bred & Owned Champion of the 2023 All-American Futurity Junior Show and in 2024 went on to be named the Grand Champion Bred & Owned Cow-Calf Pair at the National Junior Angus Show, Res. Heifer Calf Champion Div. I of the Cattlemen's Congress Junior Show, Res. Div. I Heifer Calf Champion of the Cattlemen's Congress ROV Angus Show
- Dameron Lucy 9193, a full sister to the dam, was selected as the 2021 Grand Champion Female of the National Junior Angus Show, Res. Grand Champion at the Atlantic National, and was one of the winningest heifers in the 2021 summer show season.



DAMERON LUCY 9193
Full sister to the dam of Lot 13 & 14.

13

DAMERON LUCY 5125

BD. 10/9/25 Cow AAA, 21544595 TATTOO. 5125

SCC SCH 24 KARAT 838

SCC TRADITION OF 24
SCC ROYAL BLACKBIRD GAF 112
SCC FIRST-N-GOAL GAF 114
FCF SCC PVF PROVEN QUEEN 615

DAMERON C-5 LUCY 2242

PVF INSIGHT 0129
SAV BRILLIANCE 8077
PVF MISSIE 790
DAMERON FIRST CLASS
DAMERON LUCY 868

CED	BW	WW	YW	MILK	MARB	REA	SM 45	SW 56
I+1	I+3.1	I+66	I+108	I+23	I+.09	I+.95	SB 124	SC 206

14

DAMERON LUCY 5120

BD. 10/2/25 Cow AAA, 21544572 TATTOO. 5120

SCC SCH 24 KARAT 838

SCC TRADITION OF 24
SCC ROYAL BLACKBIRD GAF 112
SCC FIRST-N-GOAL GAF 114
FCF SCC PVF PROVEN QUEEN 615

DAMERON C-5 LUCY 2242

PVF INSIGHT 0129
SAV BRILLIANCE 8077
PVF MISSIE 790
DAMERON FIRST CLASS
DAMERON LUCY 868

CED	BW	WW	YW	MILK	MARB	REA	SM 45	SW 56
I+1	I+3.1	I+66	I+108	I+23	I+.09	I+.95	SB 124	SC 206



DAMERON LUCY 5120 – She sells as Lot 14.

- Every angle tells a story on this featured October show heifer prospect by SCC SCH 24 Karat 838 back to Dameron C-5 Lucy 2242, who is the Overall Bred & Owned Champion of the 2023 All-American Futurity Junior Show and in 2024 went on to be named the Grand Champion Bred & Owned Cow-Calf Pair at the National Junior Angus Show, Res. Heifer Calf Champion Div. I of the Cattlemen's Congress Junior Show, Res. Div. I Heifer Calf Champion of the Cattlemen's Congress ROV Angus Show.
- Dameron Lucy 9193, a full sister to the dam, was selected as the 2021 Grand Champion Female of the National Junior Angus Show, Res. Grand Champion at the Atlantic National, and was one of the winningest heifers in the 2021 summer show season.



DAMERON LUCY 868 – Third dam of Lots 13 & 14.

15

DAMERON LUCY 5108

BD. 9/19/25 Cow AAA. 21544535 TATTOO. 5108

CONLEY DS CLEAR CUT 0510		CONLEY NO LIMIT		EXAR BLUE CHIP 1877B	
		CONLEY SANDY 5104		SILVEIRAS S SIS SANDY 2355	
		DAMERON FIRST CLASS		EXAR BLUE CHIP 1877B	
		DAMERON LUCY 868		S SIS SANDY 104	
				EXG RS FIRST RATE S903 R3	
				DAMERON NORTHERN MISS 3114	
				EXAR LUTTON 1831	
				MW LUCY 4	

CEU	BW	WW	YW	MILK	MARB	REA	\$M 21	\$W 46
I+3	I+1.9	I+66	I+106	I+14	I+.08	I+.72	\$B 99	\$C 149

A flawless September show heifer prospect by Conley DS Clear Cut 0510, ROV Show Bull of the Year, back to Dameron Lucy 4137, one of the top income-producing females in the Dameron Angus program and the \$85,000 past feature of a fall sale who went on to be named the Supreme Champion at the Illinois Beef Expo, Early Heifer Calf Champion of the Atlantic National, Res. Early Summer Heifer Calf Champion of the Atlantic National Junior Show, and her third-generation dam, Dameron Lucy 868, is a past ROV Transplant Dam of the Year.



DAMERON LUCY 4137
Illinois Beef Expo Supreme Champion and dam of Lot 15.



DAMERON LUCY 5108 – She sells as Lot 15.

16

DAMERON LUCY 5117

BD. 9/28/25 Cow AAA. 21544552 TATTOO. 5117

SCC SCH 24 KARAT 838		SCC TRADITION OF 24		WRIGHT SCC BOOTLEGBER 0522	
		FCF PROVEN QUEEN 419		SCC ROYAL BLACKBIRD GAF 112	
		DAMERON C-5 LUCY 2242		SCC FIRST-N-GOAL GAF 114	
		DAMERON LUCY 4137		FCF SCC PVF PROVEN QUEEN 615	
				SAV BRILLIANCE 8077	
				PVF MISSIE 790	
				DAMERON FIRST CLASS	
				DAMERON LUCY 868	

CEU	BW	WW	YW	MILK	MARB	REA	\$M 45	\$W 56
I+1	I+3.1	I+66	I+108	I+23	I+.09	I+.95	\$B 124	\$C 206

One that demands a look is this daughter of SCC SCH 24 Karat 838 back to Dameron C-5 Lucy 2242, who is the Overall Bred & Owned Champion of the 2023 All-American Futurity Junior Show and in 2024 went on to be named the Grand Champion Bred & Owned Cow-Calf Pair at the National Junior Angus Show, Res. Heifer Calf Champion Div. I of the Cattlemen's Congress Junior Show, Res. Div. I Heifer Calf Champion of the Cattlemen's Congress ROV Angus Show.

Dameron Lucy 9193, a full sister to the dam, was selected as the 2021 Grand Champion Female of the National Junior Angus Show, Res. Grand Champion at the Atlantic National, and was one of the winningest heifers in the 2021 summer show season.



DAMERON LUCY 5117 – She sells as Lot 16.

17

DAMERON STAR 5112

BD. 9/23/25 Cow AAA. 21544583 TATTOO. 5112

PVF DLX KING PIN 0058		PVF BLACKLIST 7077		PVF INSIGHT 0129	
		PVF LUCY 4189		PVF BLACKBIRD 3070	
		SCC FIRST-N-GOAL GAF 114		C&C PRIORITY 1428B EXAR	
		RF STAR 208		THOMAS LUCY 7360	
				DAMERON FIRST CLASS	
				SCC ROYAL BLACKBIRD 502	
				RITO 9FB3 OF 5HTI FULLBACK	
				RF LASSIE 645	

CEU	BW	WW	YW	MILK	MARB	REA	\$M 31	\$W 32
I+2	I+3.7	I+57	I+101	I+20	I+.42	I+.84	\$B 144	\$C 218

Refined from every angle is this featured late September show heifer prospect by PVF DLX King Pin 0058 back to the featured Star family.

Dam is a powerhouse female who is big footed and big boned with tremendous body shape and added three-dimensional thickness throughout and a daughter of SCC First-N-Goal GAF 114 produced in the Rutledge program in Illinois.

This fall show heifer prospect offers unlimited opportunity to have a tremendous 2026 summer show season.



DAMERON STAR 5112 – She sells as Lot 17.



DAMERON TRUE BALANCE 5019B – He sells as Lot 25.

25 DAMERON TRUE BALANCE 5019B

BD. 1/14/25 Bull AAA. *21182200 TATTOO. 5019B

RSA TRUE BALANCE 1311
 GAR HOME TOWN
 RSA FOREVER LADY 9204

EXAR JILT 2392
 EXAR ADDITION 9022B
 EXAR JILT 7156

GAR ASHLAND
 CHAIR ROCK SURE FIRE 6095
 EXAR MONUMENTAL 6056B
 RSA FOREVER LADY 7232

BASIN PAYWEIGHT PLUS 6048
 EXAR BLACKCAP 7444
 SYDGEN LEGACY 2813
 EXAR JILT 4841

CED	BW	WW	YW	MILK	MARB	REA	\$M 59	\$W 81
10	1.9	86	151	21	1.49	0.87	\$B 229	\$C 356

- **HEIFER BULL**
- Dameron True Balance 5019B will capture your attention on sale day. He is super attractive and built great from the ground up with three-dimensional shape and mass along with the combination of performance, presence, and paper work in one of the big-time highlights of this event.
- He is a son of RSA True Balance 1311 back to a daughter of EXAR Addition 9022B who is in the Top 10% for both weaning, yearling and marbling; in the Top 4% for \$B; and Top 5% for \$C.
- This outstanding individual comes at you with a complete package.



DAMERON THEDFORD 512 – He sells as Lot 26.

26 DAMERON THEDFORD 512

BD. 1/29/25 Bull AAA. *21515375 TATTOO. 512

HOFFMAN THEDFORD
 BAR R JET BLACK 5063
 HA RITO LADY 3839

EXAR QUEEN 9078
 3F EPIC 4631
 EXAR QUEEN 7119

CONNELLY BLACK GRANITE
 BAR R IRIS ANITA 0113
 KG SOLUTION 0018
 HA RITO LADY 0622

VARILEK PRODUCT 2010 04
 ZEBU QUEEN 1072
 HA COWBOY UP 5405
 EXAR QUEEN 5303

CED	BW	WW	YW	MILK	MARB	REA	\$M 73	\$W 95
9	-0.2	84	148	33	0.63	0.69	\$B 163	\$C 284

- **HEIFER BULL**
- Dameron Thedford 512 is a sure-shot, calving-ease bull with negative birth and tremendous spread from birth to yearling without sacrificing carcass and \$Values.
- He is a son of Hoffman Thedford back to the featured EXAR Queen family on the bottom side and ranks in the Top 15% of the breed for weaning, yearling, milk, and carcass weight; in the Top 35% of the breed for \$M; and Top 35% for \$C.



DAMERON THEDFORD 511 – He sells as Lot 27.

27 DAMERON THEDFORD 511

BD. 1/28/25 Bull AAA. *21515372 TATTOO. 511

HOFFMAN THEDFORD
 BAR R JET BLACK 5063
 HA RITO LADY 3839

XLAR BLACKCAP 8513
 TEX PLAYBOOK 5437
 VAR BLACKCAP 0390

CONNELLY BLACK GRANITE
 BAR R IRIS ANITA 0113
 KG SOLUTION 0018
 HA RITO LADY 0622

BASIN PAYWEIGHT 1682
 RITA 1C43 OF 9M26 COMPLETE
 SITZ UPWARD 307R
 EXAR NEW DESIGN 4212

CED	BW	WW	YW	MILK	MARB	REA	\$M 111	\$W 99
13	0.1	80	143	34	0.62	0.85	\$B 161	\$C 320

- **HEIFER BULL**
- A featured heifer bull that is low birthweight, double-digit, calving-ease direct with explosive growth, longevity, carcass, and \$Values. He is a direct son of Hoffman Thedford back to XLAR Blackcap 8513, a foundation Blackcap female in the Dameron Angus program.
- This bull ranks in the Top 20% for weaning and yearling, Top 30% for carcass weight, Top 35% for ribeye, Top 1% for \$M, and Top 15% for \$C.
- Dameron Blackcap 431, a maternal sister, was the \$15,000 feature of the 2025 fall production sale going to Ingram Angus of Tennessee.
- This bull is an arithmetic superstar who will take your program to the next level.

28 DAMERON REAL WORLD 540

BD. 3/18/25 Bull AAA. *21515377 TATTOO. 540

WOODHILL REAL WORLD		WOODHILL REALITY	WOODHILL RELEVANCE					
		WOODHILL EVERGREEN A289-F094	WOODHILL EVERGREEN Y121-B56					
			WOODHILL GRANITE X353-C355					
			WOODHILL EVERGREEN W310-A289					
GWF GEORGINA 559K		KR CADILLAC RANCH	KR CADILLAC JACK					
		CHAMPION HILL GEORGINA 7784	KR PRIDE 4031					
			SAV BRILLIANCE 8077					
			CHAMPION HILL GEORGINA 5938					
CED	BW	WW	YW	MILK	MARB	REA	\$M 70	\$W 71
12	-0.4	66	125	32	0.41	0.53	\$B 133	\$C 243
BW: 64 lbs.		ADJ. WW: 824 lbs.		ADJ. YW: 1,397 lbs.		SC: 39 cm		

- **HEIFER BULL**
- Dameron Real World 540 is a son of Woodhill Real World back to the featured Georgina family on the bottom side.
- He is a negative-birth, double-digit, calving-ease direct, sure-shot heifer bull who reads with tremendous maternal genetics and has a great look. He ranks in the Top 45% for yearling weight, Top 15% for milk, Top 10% for teat, and Top 15% for udder while ranking in the Top 45% for \$M.
- He not only combines growth and calving ease along with high maternal genetics but, more importantly, a tremendous eye-appealing look that will continue to sire cattle with great presence.



DAMERON REAL WORLD 540 – He sells as Lot 28.

29 DAMERON PROMINENT 4707

BD. 8/14/24 Bull AAA. 21515379 TATTOO. 4707

BOYD PROMINENT 1043		CONNEALY CONFIDENCE PLUS	CONNEALY CONFIDENCE 0100					
		BOYD ROSETTA 4058	ELBANNA OF CONANGA 1209					
			EXAR DENVER 2002B					
			SAV ROSETTA 9123					
SELDOM REST SANDY 2207		EXAR CLASSEN 1422B	DAMERON FIRST CLASS					
		SILVEIRAS S SIS SANDY 2354	EXAR PRINCESS 2006					
			SILVEIRAS STYLE 9303					
			KNC CABIN CREEK SANDY 804					
CED	BW	WW	YW	MILK	MARB	REA	\$M 78	\$W 63
-4	3.8	71	122	25	0.79	0.76	\$B 155	\$C 279
BW: 71 lbs.		ADJ. WW: 784 lbs.		ADJ. YW: 1,403 lbs.		SC: 38.5 cm		

- A son of Boyd Prominent 1043 back to the Sandy family. Dam was a division champion at the Atlantic National.
- This bull reads with balanced traits across the board and ranks in the Top 25% of the breed for \$M. He combines the Rosetta, Princess, and Sandy families into a powerful genetic package.



DAMERON PROMINENT 4707 – He sells as Lot 29.

30 DAMERON SIDEKICK 2493

BD. 10/24/24 Bull AAA. 21311720 TATTOO. 2493

DAMERON SIDEKICK 102		E&B PLUS ONE	CONNEALY CONFIDENCE PLUS					
		DAMERON PRIMROSE 659	E&B LADY 1023 PRECISION 936					
			DAMERON FIRST CLASS					
			EXAR PRIMROSE 0731					
RF BARBARA 2049		MUSGRAVE SKY HIGH 1535	MUSGRAVE BIG SKY					
		DDA BARBARA 1231	FLAG QUEEN W 00649					
			BC LOOKOUT 7024					
			DDA BARBARA 0411					
CED	BW	WW	YW	MILK	MARB	REA	\$M 61	\$W 78
13	-0.4	60	107	39	0.65	0.89	\$B 156	\$C 263
BW: 71 lbs.		ADJ. WW: 796 lbs.		ADJ. YW: 1,305 lbs.		SC: 40 cm		

- **HEIFER BULL**
- A featured heifer bull by Dameron Sidekick 102 back to a daughter of Musgrave Sky High 1535 and the Barbara family.
- This bull ranks in the Top 30% for ribeye area EPD, Top 25% for \$W, and blends two of the very best high-maternal cow families into a three-generation pedigree.
- Dameron Primrose 659, his paternal granddam, is a big-volumed, wide-based female with three-dimensional shape, power, and mass in a high-quality package along with the blending of the featured Barbara family that has a tremendous look, presence, and style.



DAMERON SIDEKICK 2493 – He sells as Lot 30.



DAMERON EXEC DECISION 517 – He sells as Lot 31.

31 DAMERON EXEC DECISION 517

BD. 2/22/25 Bull AAA. 21516000 TATTOO. 517

BNWZ EXECUTIVE DECISION 2219
 PPF INSIGHT 0129 SAV BRILLIANCE 8077
 CCC SARA'S DREAM 5116 PPF MISSIE 790
 DAMERON FIRST CLASS
 SILVEIRAS SARAS DREAM 1339

DAMERON BLACKBIRD 003
 STEVENSON TURNING POINT PLATTMERE WEIGH UP K360
 STEVENSON PRIDE 167X
 DAMERON FIRST CLASS
 BT BLACKBIRD 194R

CED	BW	WW	YW	MILK	MARB	REA	\$M 65	\$W 55
-3	2.7	65	105	22	0.2	0.99	\$B 146	\$C 254
BW: 71 lbs.		ADJ. WW: 805 lbs.		ADJ. YW: 1,407 lbs.		SC: 38.5 cm		

- An attractive son of BNWZ Executive Decision 2219 back to a daughter by the \$70,000 GENEX Beef AI Sire, Stevenson Turning Point, and the Blackbird family on the bottom side.
- This bull reads with balanced paper work and tremendous phenotype with genetics from a long-time, proven family in the Dameron Angus program. He stems back to the third-generation BT Blackbird 194R, a foundation Blackbird female in the Dameron Angus program.
- His grandmother has been a proven producer in the program and produced numerous features throughout the years.



MR FR DAMERON SKY HIGH 5018 – He sells as Lot 32.

32 MR FR DAMERON SKY HIGH 5018

BD. 1/15/25 Bull AAA. 21328141 TATTOO. 5018

MUSGRAVE SKY HIGH 1535
 MUSGRAVE BIG SKY CONNEALY EARNAN 078E
 SAV PRIMROSE 7861
 FLAG QUEEN W 00649 SAV 004 DENSITY 4336
 PLATTMERE QUEEN W 660

MISS FLAT ROCK PRIMROSE 0018
 DAMERON FOUNDATION 881 MUSGRAVE FOUNDATION
 DAMERON PRIMROSE 537
 FR PRIMROSE LADY 8018 PENNERS-CC DOUBLE BLACK 2257
 LAGRAND PRIMROSE LADY 5018

CED	BW	WW	YW	MILK	MARB	REA	\$M 66	\$W 65
8	0.5	58	101	34	0.56	0.86	\$B 130	\$C 235
BW: 70 lbs.		ADJ. WW: 648 lbs.		ADJ. YW: 1,211 lbs.		SC: 36.5 cm		

- **HEIFER BULL**
- A low-birthweight, calving-ease bull by Musgrave Sky High 1535 back to the Primrose Lady family. This low-birthweight heifer bull reads in the Top 35% of the breed for ribeye area EPD, Top 10% for milk, Top 25% for docility, and Top 25% for claw.
- He is an attractive-made, long-bodied bull who is super sound structured, big footed, and ready to cover heifers.



DAMERON BULLET PROOF 4798 – He sells as Lot 33.

33 DAMERON BULLET PROOF 4798

BD. 7/22/24 Bull AAA. *21515378 TATTOO. 4798

BEAR MTN BULLET PROOF
 BEAR MTN JUSTIFY KG JUSTIFIED 3023
 BEAR MTN JUDY 3092
 BEAR MTN GAMMER 0562 CONLEY HYLINE 8045
 CONLEY GAMMER 8134

EXAR PRINCESS 2698
 C&C INTUITION 7104 PPF INSIGHT 0129
 C&C WINNIE 2048
 DAMERON FIRST CLASS
 EXAR PRINCESS 6414

CED	BW	WW	YW	MILK	MARB	REA	\$M 70	\$W 88
5	2.3	79	129	36	0.29	0.75	\$B 139	\$C 250
BW: 69 lbs.		ADJ. WW: 904 lbs.		ADJ. YW: 1,478 lbs.		SC: 39 cm		

- A son of Bear Mtn Bullet Proof back to the Princess family.
- This high-growth, high-performance bull ranks in the Top 25% of the breed for weaning weight EPD, Top 5% of the breed for milk, Top 35% for carcass weight, Top 45% for ribeye, Top 45% for \$M, and is a long-bodied, attractive-made bull with loads of performance to sire calves that will add profit to your bottom side.

34 DAMERON POINT GUARD 4147

BD. 9/4/24 Bull AAA. 21515427 TATTOO. 4147

DAMERON FR POINT GUARD
 STEVENSON TURNING POINT
 DAMERON NORTHERN MISS 8188

PLATTEMERE WEIGH UP K360
 STEVENSON PRIDE N67X
 KR CASINO 6243
 DAMERON NORTHERN MISS 3114

DAMERON NORTHERN MISS 195
 KR CASINO 6243
 DAMERON C5 NORTHERN MISS1406

CFCC BLACK JACK 001
 MALSONS SAVANNAH 27Y
 EXG RS FIRST RATE S903 R3
 DAMERON NORTHERN MISS 3114

CEB	BW	WW	YW	MILK	MARB	REA	\$M 58	\$W 58
8	1.4	54	89	27	0.24	0.59	\$B 102	\$C 190

BW: 66 lbs.	ADJ. WW: 823 lbs.	ADJ. YW: 1,343 lbs.	SC: 39 cm
-------------	-------------------	---------------------	-----------



DAMERON POINT GUARD 4147 – He sells as Lot 34.

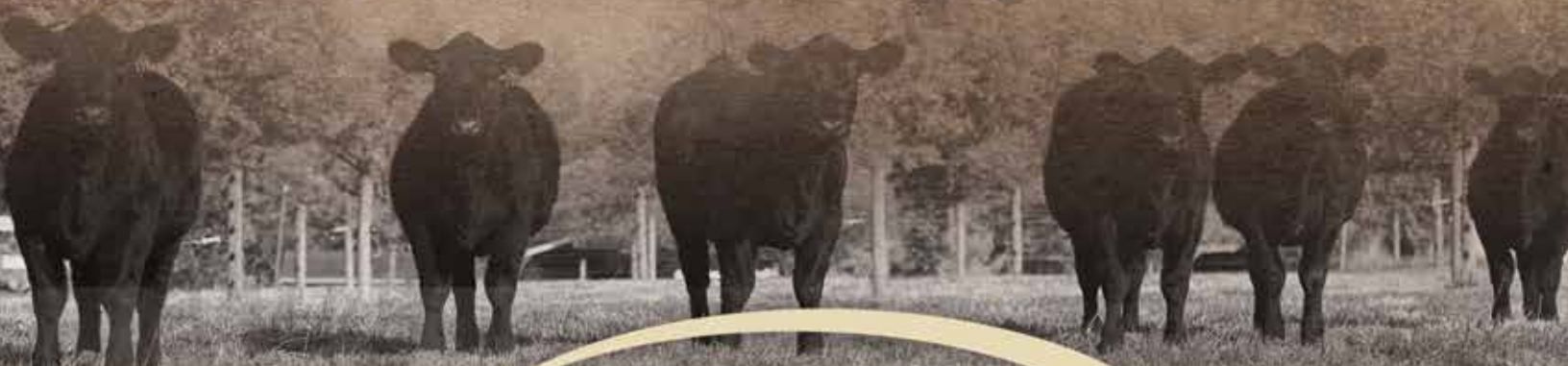
- HEIFER BULL

- This featured heifer bull is an age-advantage bull by Dameron FR Point Guard back to the Northern Miss family on the bottom side. He is a low-birthweight, calving-ease bull with tremendous eye appeal, balance, and quality with a heifer bull look.
- He stems back to Dameron C5 Northern Miss 1406, a past top-selling female and Champion Cow-Calf Pair at the National Junior Angus Show; she is a full sister to the Triple Crown Winner, Dameron First Class, and a daughter of the all-time, high income-producing female in the Dameron Angus program, Dameron Northern Miss 3114.



ANNUAL FALL *Production Sale*

SATURDAY, NOVEMBER 28TH, 2026 - AT THE FARM, LEXINGTON, IL



**DAMERON
ANGUS**

ANNUAL LIVE ONLINE

Spring Sale



TUESDAY, APRIL 14, 2026 - 7:30 P.M. CDT

GARY (309)261-2191 JEFF (309)532-2000

VIEW PHOTOS AND VIDEOS ONLINE AT WWW.DAMERONANGUS.COM OR FACEBOOK @DAMERONANGUSFARMS